**ICON PRICE GUIDE 2016-2017**

Thank you for your enquiry. Each icon commission is unique. Icons are hand made using traditional techniques and materials, namely egg tempera on gessoed birch ply panels. The pigments used include semi-precious stones such as azurite and lapis lazuli and natural earths such as the ochres. If gilded areas are required (halos and backgrounds) extra thick 23 ½ carat gold leaf is applied.

The prices below are for guidance only. Icons can be designed to depict more than one figure and boards can be custom made for subjects that require different proportions. Hardwood boards with kivotos (raised border) can be ordered by request.

There are three choices of background to an icon:

1. **Gilded and burnished gold.** This gives a highly reflective finish. This is a complex and time consuming process using 23 ½ carat extra thick gold leaf, hence the higher price.
2. **Gilded and polished matt gold.** A similar process as used for the burnished gold but it is applied with a different technique that leaves the gold matt to semi-polished rather than highly reflective.
3. **Painted.** Traditional colours include off white, vermillion red, deep blue, yellow ochre and blue green (azurite and green earth).

Size H x W in cm	Number of figures	Background gilded and burnished (reflective)	Background gilded and polished (matt)	Background painted	Background painted with gilded halo
12 x 10	1 (Face only)	£350	£325	£275	£300
14 x 12	1 (half length)	£400	£375	£325	£350
18 x 24	1 (half length)	£560	£510	£460	£490
36 x 24	1 (half length)	£660	£610	£560	£590
40 x 31	1 (half length)	£1200	£1100	£900	£950
54 x 42	1 (half length)	£2450	£2300	£2000	£2100

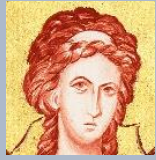
A deposit of 10% towards the cost of the icon confirms the commission. For icons below £500 the balance is due on completion. For larger icons, staged payments are made at the beginning, middle and end of the work.

VAT is not chargeable. Costs of carriage (packing, mail and insurance) are not included in the prices.

Please read 'Commission an icon' in conjunction with this price guide and don't hesitate to get in touch with a query.

Thank you,

Ronnie



## Icon board stock list August 2016

This is a summary of icon boards which I have in stock indicating whether they are gessoed and ready to paint.

Boards which are not yet gessoed will be prepared by the end of October 2017.

Boards can be ordered pre-gessoed to a specific size from a third party but allow 4-6 weeks for delivery.

	Size	Width	Gessoed	Quantity
SMALL	100 x 120	23mm	no	8
	120 x160	23mm	no	4
	120x 145	23mm	yes	8
	185 x 240	23mm	yes	3
	190 x 250	12mm	yes	1
	170 x210	17mm	no	1
MED	220 x 290	12mm	yes	2
	240 x 320	12mm	yes	2
	190 x240	23mm	no	1
	220 x 270	17mm	no	1
	210 x 270	17mm	no	3
	240 x 360	23mm	no	9
LARGE	350 x 385	17mm	no	1
	345 x 360	17mm	no	1
	420 x 540	15mm	no	2
	420 x 540	15mm	yes	1